

dancoo
Quiet Simple Pods



F FAMILY

dancoo.com

F FAMILY

dancoo F



dancoo F

Packaging and transportatinon

Net weight (kg)
365

Gross weight (kg)
457

UNIT/20GP
12

UNIT/40GP
24

UNIT/40HQ
24

Packaging size
2270 x 840 x 1145mm

Feature

Exterior

Powder coated steel

Glass (door & rear)

Enamelled glass

Frame and table

Enamelled glass attached+laminated on birch plywood

Solid walls, roof and floor

A sandwich element of sheet metal, birch plywood, recycled acoustic foam and acoustic felt.

An anti-static and stain resistant low loop pile carpet for interior floor.

Weight

364.6

Measurements

Exterior (height, width, depth)

220 x 100 x 105cm

Interior (height, width, depth)

200 x 80 x 101cm

Door (height, width)

220 x 100cm

Table (width, depth, height)

65 x 30 x 16cm

Electric sockets are integrated on the table

Power consumption

Power consumption standard

3.24W while in use

LED light :1.8W

Fans in total: 1.44W

0.75W standby power consumption or up on request

Power consumption option

LED light: LED brightness adjustment options

Fans in total: up to14.4W

Input: 110-240VAC, 10A, 50/60Hz

Outlets

Regular table:

Power socket + optional LAN cable (extra cost)

Output values

Output VAC (power socket): 100–240 VAC, 8 A, 50–60 Hz

Output USB charging: USB Type A socket, Type C option, Maximum combined output 18 W

Air Ventilation

Air Ventilation Ventilation rate:

More than 1m³/ minute standard

Adjustable higher ventilation options

Acoustic performance

For speech level reduction (D_{s,a}) and Noise isolation class (NIC), third party test reports are available per request

Certificates

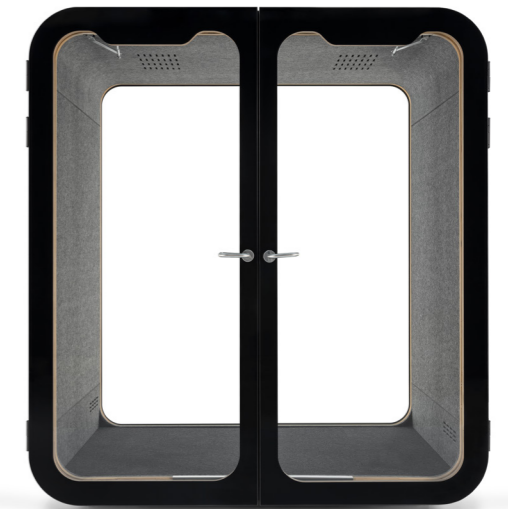


• Specifications are subject to change without notice.

dancoo.com

F FAMILY

dancoo 2F



dancoo 2F

Packaging and transportation

Net weight (kg)
620

Gross weight (kg)
723

UNIT/20GP
6

UNIT/40GP
12

UNIT/40HQ
14

Packaging size
2270 × 930 × 1330mm
+900 × 900 × 1100mm

Feature

Exterior
Powder coated steel

Glass (door & rear)
Enamelled glass

Frame and table
Enamelled glass attached+laminated on birch plywood

Solid walls, roof and floor
A sandwich element of sheet metal, birch plywood, recycled acoustic foam and acoustic felt.
An anti-static and stain resistant low loop pile carpet for interior floor.

Weight
620.3

Measurements

Exterior (height, width, depth)
220 × 200 × 125cm

Interior (height, width, depth)
200 × 180 × 122cm

Door (height, width)
220 × 100cm

Table (width, depth, height)
70 × 38 × 64cm

Power consumption

Power consumption standard

6.48W while in use
LED light :3.6W
Fans in total: 2.88W

0.75W standby power consumption or up on request

Power consumption option

ED light: LED brightness adjustment options
Fans in total: up to 28.8W
Input: 110-240VAC, 10A, 50/60Hz

Outlets

Regular sofa:
Power socket + optional LAN cable (extra cost)

Output values

Output VAC (power socket): 100–240 VAC, 8 A, 50–60 Hz

Output USB charging: USB Type A socket, Type C option,
Maximum combined output 18 W

Air Ventilation

Air Ventilation Ventilation rate:
More than 2m³/minute standard
Adjustable higher ventilation options

Acoustic performance

For speech level reduction (D_{s,A}) and Noise isolation class (NIC),
third party test reports are available per request

Certificates



• Specifications are subject to change without notice.

dancoo.com

F FAMILY

dancoo 2F2



dancoo 2F2

Packaging and transportation

Net weight (kg)
624

Gross weight (kg)
727

UNIT/20GP
4

UNIT/40GP
9

UNIT/40HQ
13

Packaging size
2270 × 1210 × 1330mm
+900 × 900 × 1100mm

Feature

Exterior
Powder coated steel

Glass (door & rear)
Enamelled glass

Frame and table
Enamelled glass attached+laminate on birch plywood

Solid walls, roof and floor
A sandwich element of sheet metal, birch plywood, recycled acoustic foam and acoustic felt.
An anti-static and stain resistant low loop pile carpet for interior floor.

Weight
623.6

Measurements

Exterior (height, width, depth)
220 × 220 × 123.6cm

Interior (height, width, depth)
200 × 200 × 120cm

Door (height, width)
220 × 84.6cm

Table (width, depth, height)
70 × 53 × 64cm

Power consumption

Power consumption standard
6.48W while in use
LED light :3.6W
Fans in total: 2.88W

0.75W standby power consumption or up on request

Power consumption option
ED light: LED brightness adjustment options
Fans in total: up to 28.8W
Input: 110-240VAC, 10A, 50/60Hz

Outlets

Regular sofa:
Power socket + optional LAN cable (extra cost)

Output values

Output VAC (power socket): 100–240 VAC, 8 A, 50–60 Hz

Output USB charging: USB Type A socket, Type C option,
Maximum combined output 18 W

Air Ventilation

Air Ventilation Ventilation rate:
More than 2m³/ minute standard
Adjustable higher ventilation options

Acoustic performance

For speech level reduction (D_{s,A}) and Noise isolation class (NIC),
third party test reports are available per request

Certificates



• Specifications are subject to change without notice.

dancoo.com

F FAMILY

dancoo 4F2



dancoo 4F2

Packaging and transportatinon

Net weight (kg)
1110

Gross weight (kg)
1280

UNIT/20GP
2

UNIT/40GP
8

UNIT/40HQ
8

Packaging size
2470 × 1000 × 1350mm × 2

Feature

Exterior
Powder coated steel

Glass (door & rear)
Enamelled glass

Frame
Enamelled glass attached

Solid walls, roof and floor
A sandwich element of sheet metal, birch plywood, recycled acoustic foam and acoustic felt.
An anti-static and stain resistant low loop pile carpet for interior floor.

Weight
1100

Measurements

Exterior (height, width, depth)
220 × 220 × 243.6cm

Interior (height, width, depth)
200 × 200 × 237.2cm

Door (height, width)
220 × 84.6cm

Table (width, depth, height)
/

Power consumption

Power consumption standard

12.96W while in use
LED light :7.2W
Fans in total: 5.76W

0.75W standby power consumption or up on request

Power consumption option

ED light: LED brightness adjustment options
Fans in total: up to 57.6W
Input: 110-240VAC, 10A, 50/60Hz

Outlets

Regular wall or floor:
Power socket + optional LAN cable (extra cost)

Output values

Output VAC (power socket): 100–240 VAC, 8 A, 50–60 Hz

Output USB charging: USB Type A socket, Type C option,
Maximum combined output 18 W

Air Ventilation

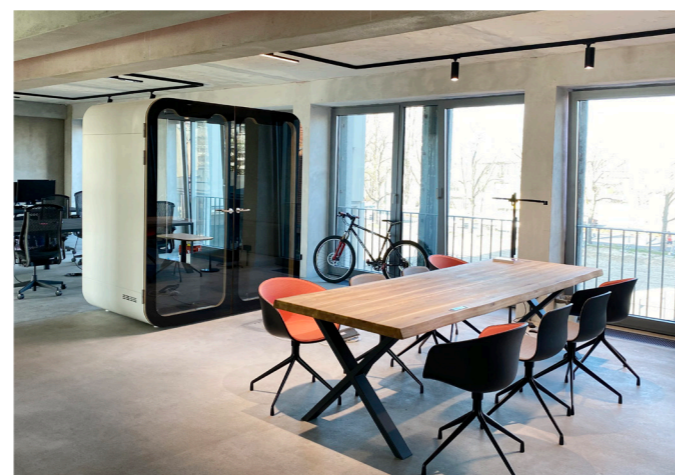
Air Ventilation Ventilation rate:
More than 4m³/ minute standard
Adjustable higher ventilation options

Acoustic performance

For speech level reduction (D_{s,a}) and Noise isolation class (NIC),
third party test reports are available per request

Certificates





F FAMILY

dancoo F / 2F / 2F2 / 4F2

Color options - Dancoo standard color



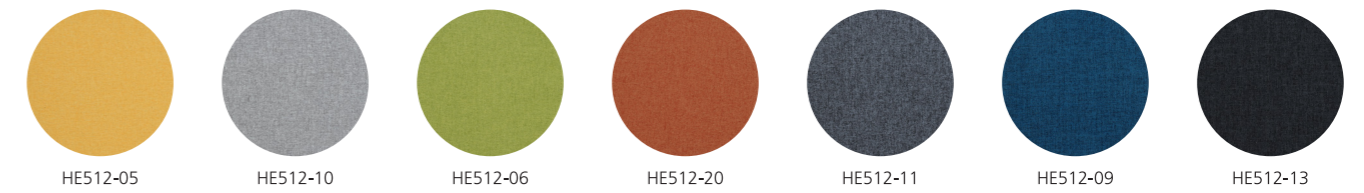
Color options - Exterior color options



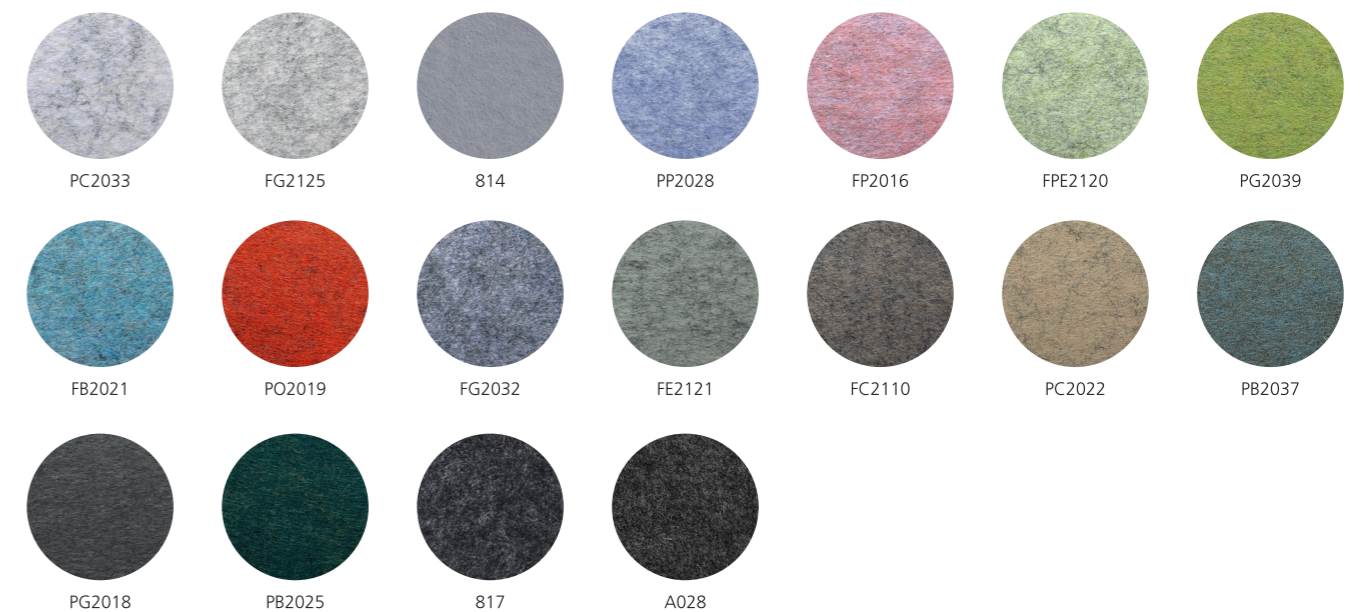
Color options - Frame and table



Color options - Sofa Upholstery



Color options - Interior - PET acoustic felt



• The color number starting with F meets the requirements for the flame spread index and smoke developed index of class A Interior walls and ceilings finish category in accordance with ASTM E84-2021a

dancoo

Quiet Simple Pods

In our noisy and complex world
Quiet and simple is rare and appreciated
Quiet and simple is closer to truth

Quiet Simple Pods for Quiet Office

dancoo.com